

- ---
- 



We are so proud of you all. You persevered and are joining the growing ranks of STEM trailblazers! We welcome you to **post on the** \_\_\_\_\_ your picture and your plans. If you are still job searching, be sure to **submit your information and resume to the** \_\_\_\_\_! Finally, be sure to stay in touch by **joining the [National Association of LSAMP Alumni](#)** It is free to join and as a member, you will have the opportunity to connect with hundreds of other diverse STEM professionals. With love and joy - The LSAMP Family

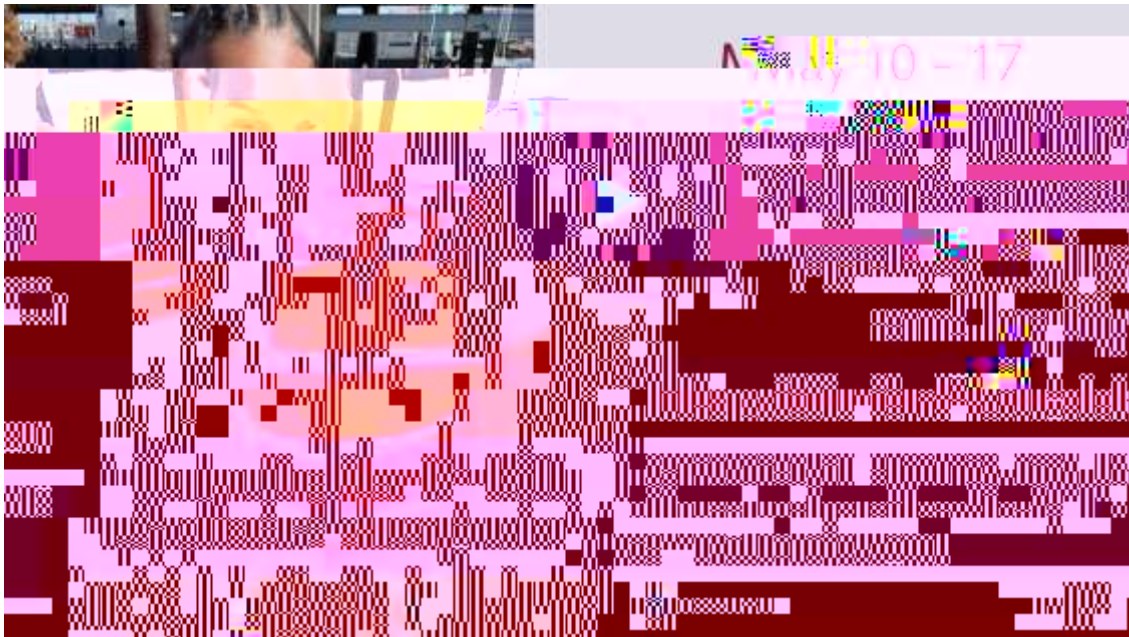
**Dear LSAMP Community -**



## Call for Proposals: Mindsets for STEM Virtual Conference

The Florida-Carib Conference will be July 13-15 and this is your opportunity to present what you know about Exploring Mindset Theory, Intervention, and Practice. We have 3 presentation options available





## NSF STEM for All Video Showcase

This year's \_\_\_\_\_ will have over 250 short videos depicting innovative, federally funded projects aimed at improving Science, Technology, Math, Engineering and CS education.

LSMRCE's presentation entitled, "GAMECHANGER: 30 Years of Diversifying the STEM Pipeline," celebrates the LSAMP program's 30 years of growth and impacts. The **video will be live for voting on May 10th**. We invite you view, discuss, and vote! \_\_\_\_\_

Did your program submit a video? Please let us know and we will highlight your video on our social media channels! Contact Deb Cole at \_\_\_\_\_.

**Executive Office of the President, Office of  
Science Technology Policy Internship**

### **Application deadline May 15, 2022**

The Summer 2022 term begins on June 20, 2022 and ends on August 12, 2022. Interns will receive a stipend of \$6,000 for participation in the program. All internships are located in Washington, D.C. and are full-time; participants must be able to commit to a minimum of 35 hours per week (Monday – Friday). \_\_\_\_\_

## **Kibo Robot Programming Challenge**

### **Application deadline is May 16, 2022**

The Kibo Robot Programming Challenge (Kibo-RPC) is an educational program in which students solve various problems by moving free-flying robots (Astrobee) with \_\_\_\_\_ The competition presents tasks/obstacles for students to solve using the Kibo module as a game space. The competition includes a time requirement and problem-solving ability. Teams who win the preliminary round (domestic round) held in their country using the simulator for this competition on the ground can participate in the Final Round which will be held on-board the International Space Station in the Kibo module. \_\_\_\_\_

## **Fellowship/Internship Program for Students interested in Toxicology**

### **Application deadline is June 30, 2022**

The \_\_\_\_\_ (ToxMSDT), housed at the University of California Davis, is a special opportunity for underrepresented undergraduate science students to participate in a year-long mostly remote toxicology training and mentoring program. \_\_\_\_\_

**Deadline extended to June 1: Stanford  
Medicine's Propel Fellowship for postdocs  
from diverse backgrounds - apply now!**

**Application deadline is June 1, 2022**

Stanford School of Medicine welcomed its first cohort of ten Propel Postdoctoral Scholars. The \_\_\_\_\_ seeks to attract and train talented





[Tweet](#)

[Forward](#)

Share Your Opportunities

Content: 07 637107(n)409gB'

